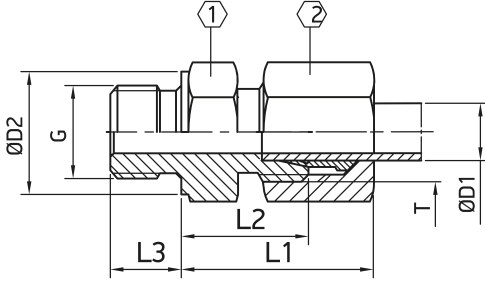


Ara Bağlantı Rakoru



Diş Ölçüsü Thread		Boyut Ölçüleri (mm) Dimensions in (mm)							
G	T	ØD 1	L1	L2	L3	ØD2	①	②	PN Bar
G1/8"-28	M12x1.5	6L	23	15.5	8	14	14	14	315
G1/8"-28	M14x1.5	8L	23	15.5	8	14	14	17	315
G1/4"-19	M12x1.5	6L	25	17	12	19	19	14	315
G1/4"-19	M14x1.5	8L	25	17.5	12	19	19	17	315
G1/4"-19	M16x1.5	10L	26	18	12	19	19	19	315
G1/4"-19	M18x1.5	12L	26	19	12	19	19	22	315
G3/8"-19	M14x1.5	8L	26	18.5	12	22	22	17	315
G3/8"-19	M16x1.5	10L	27	19.5	12	22	22	19	315
G3/8"-19	M18x1.5	12L	27	18.5	12	22	22	22	315
G3/8"-19	M22x1.5	15L	29	22	12	22	24	27	315
G1/2"-14	M14x1.5	8L	28	19	14	27	27	17	315
G1/2"-14	M16x1.5	10L	28	20	14	27	27	19	315
G1/2"-14	M18x1.5	12L	28	20	14	27	27	22	315
G1/2"-14	M22x1.5	15L	29	22	14	27	27	27	300
G1/2"-14	M26x1.5	18L	31	22	14	27	27	32	300
G1/2"-14	M30x2	22L	33	24	14	27	32	36	300
G3/4"-14	M26x1.5	18L	31	22	14	32	32	32	300
G3/4"-14	M30x2	22L	33	24	16	32	32	36	300
G1"-11	M36x2	28L	34	25	18	40	41	41	300
G1"-11	M45x2	35L	39	28	18	40	46	50	300
G1"1/4-11	M45x2	35L	39	28	20	50	50	50	300
G1 1/4-11	M52x2	42L	42	30	20	49	55	60	300
G1"1/2-11	M52x2	42L	42	30	22	55	55	60	300

